

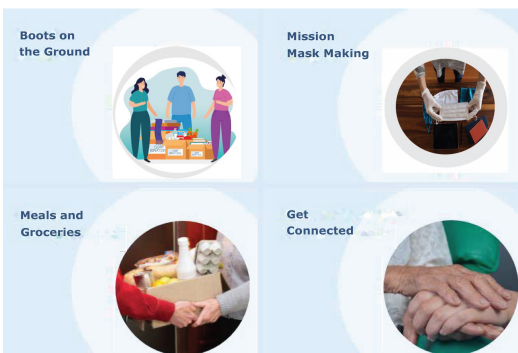


# NEWSLETTER

## Sewa International- New Jersey & New York

### Sewa North Jersey: Winter Coat Drive

As part of the Sewa North Jersey LEAD Program, 50 LEAD participants collected winter jackets, winter shoes, gloves, scarves, socks, hats, winter pants, and other gently used winter wear for the annual winter coat drive. Each participant dropped their collection at the Drop-Box in their respective town. The drive concluded this month, and proved to be a great success. Each participant collected an average of 4-5 coats, 4-5 pairs of gloves, and 4-5 caps. More than 750 winter items were donated in total!



### Sewa North Jersey: Priest Support

As part of Neighborhood Sewa and Sewa's COVID-19 relief initiative, Sewa volunteers have been providing help and support to Priests in need. The support offered includes: grocery deliveries, addressing clothing needs, etc.

## Sewa North Jersey: Food Pantry & Soup Kitchen Donation

The Sewa North Jersey LEAD Participants have collected more than 8,300 pounds of non-perishable food items throughout the duration of the LEAD program. This month 1,950 pounds of food was collected. The donations were dropped off at the following locations: The Interfaith Food Pantry in Morris Plains, Montville Food Pantry, Parsippany Community Center, and Morristown Soup Kitchen.



## Sewa North Jersey: October Baithak

The Sewa North Jersey chapter held the monthly baithak over zoom on October 31, 2020. The meeting was attended by 14 volunteers. The topics discussed include: Sewa Diwali, The Street Clean-Up initiative, Sewa's Soup Kitchen initiative, etc.

## Sewa North Jersey: Street Clean-Up

Sewa North Jersey started a new initiative, under its overarching Environmental Awareness initiative, called #KeepMyStreetClean. The basis of the initiative is simple: volunteers pick a street in their neighborhood, and clean it on a regular basis. Sewa provides the equipment and guidance. The statistics collected, are provided to the NJ Clean Communities which is a NJ State program to help plan better environmental programs for the state.



## Sewa North Jersey: #SewaDiwali

#SewaDiwali an initiative where 70 Dharmik and Linguistic organizations such as Hindu/Buddhist/Jain temples, Gurdwaras, and Indian socio-cultural establishments come together, from over 25 states) to collect food and donate to the needy. Sewa North Jersey's #Sewa Diwali initiative for the month of October was a great success. We reached a total of over 1,950 pounds of monthly collections. All of the efforts put in by the Sewa volunteers is greatly appreciated. Food pantries and Soup kitchens in Morris Plains, Morristown, Parsippany and Montville benefited greatly from this donation. We hope this momentum continues into November! If you would like to be a part of this annual event, please drop off your non-perishable food items at the locations listed on the flyer.





### Sewa International

North Jersey

### Sewa Diwali Food Drive

This festive season let us embrace the spirit of Diwali and contribute to the needy

**DROP YOUR FOOD CONTRIBUTIONS BY  
NOVEMBER 30, 2020**

**AT**

MANI JI - 23 BRANDYN LN, PARSIPPANY  
SENTHIL JI - 55 QUAIL RUN, RANDOLPH  
CHANDRA JI - 5 OXFORD DR, MONTVILLE

**What You can donate**

Cereals, Peanut Butter, Canned Vegetables,  
Canned Fruits, Canned Pasta, Crackers, Coffee,  
Tea, Ketchup, Cookies, Box Rice

For more Info, visit us at:  
**sewadiwali.org**  
or  
Contact: Rohit Sharma at 248-918-9175  
Srini Iyer at 973-615-4582

# happy diwali



## Sewa North Jersey: Reusable Bag Distribution

As a part of Sewa's Environmental Awareness initiative Sewa volunteers and LEAD participants helped spread the word about the single use plastic ban in Parsippany, NJ. GEP Corp, has been instrumental in sponsoring this initiative by designing and providing Sewa with 2000 reusable cotton bags. This initiative would not have been possible without GEP. These bags will help raise awareness and spread Sewa's message about the need to protect the environment.

Each LEAD participant was given 10 reusable bags, and were tasked with distributing the bags to friends and neighbors. Over 700 bags have been distributed so far. Now, the LEAD participants distribute the bags to Sewa supporters and donors who help with the food collection for local soup kitchens, and food pantries.

The reusable bags are handmade by tribal weavers in India, and thus this initiative also serves to provide them with a source of income through Sewa's Gata Katha project.



## Upcoming Events:

### North Jersey:

1. #SewaDiwali Initiative
2. NJ Preist Support (Ongoing)

Visit our Chapter Website, Facebook, and Instagram Pages:

<https://sewausa.org/Chapter/NewJersey>

<https://www.facebook.com/SEWANorthNJ>

<https://www.instagram.com/sewanorthjersey>

<https://www.instagram.com/centraljerseysewa>

<https://www.facebook.com/centraljerseysewa>

Join the North Jersey Volunteers WhatsApp Group:

<https://chat.whatsapp.com/oqAhEyU3v99DGfe51V9Pf>

*Sewa urges everyone to practice social distancing, follow CDC guidelines and remain safe.*

### Helpful Links:

<https://www.cdc.gov/> - Official site to get updates on Corona virus

<https://nj.gov/> - New Jersey State update on Corona

<https://www.ny.gov/> - New York State update on Corona

Quotation: "Act as if what you do makes a difference. IT DOES."

- William James

*Om Sarve Bhavantu Sukhinah*